



GMT MONTHLY MEMBERSHIP PROGRESS REPORT

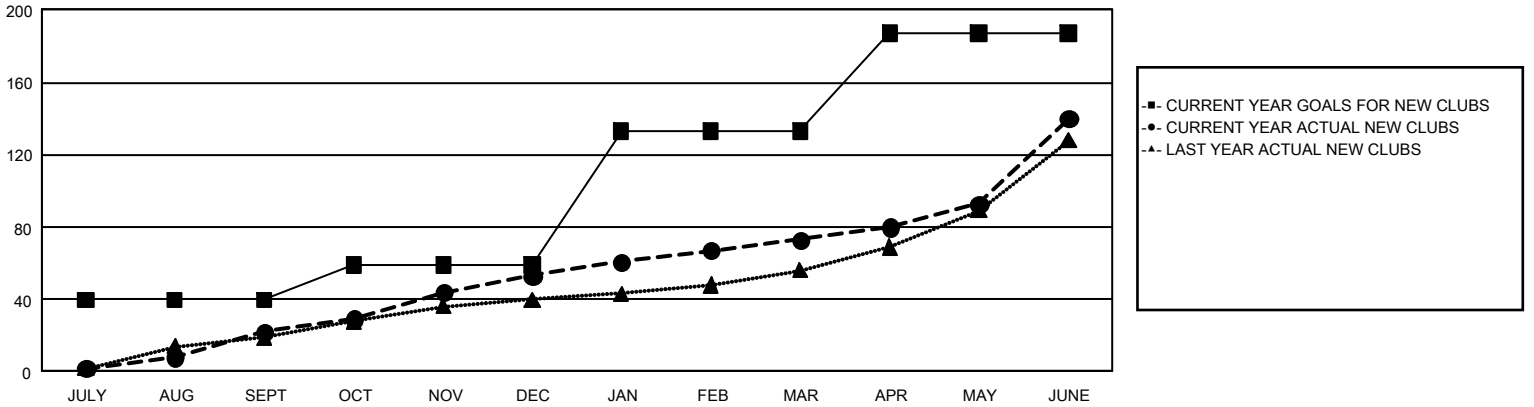
GAT Constitutional Area 3

Results as of: 6/30/2024

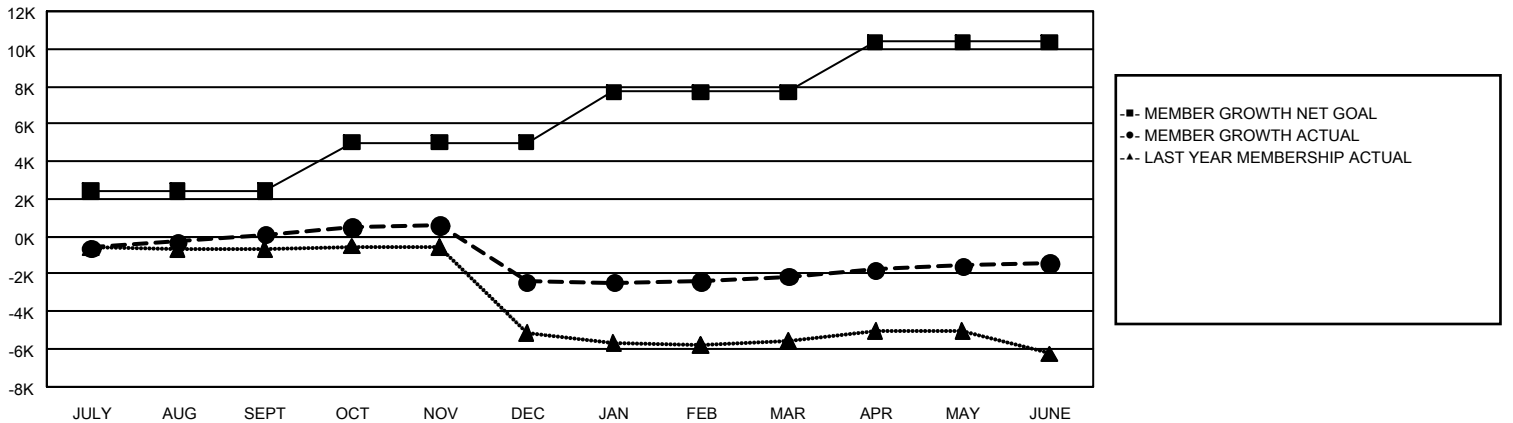
REPORT DOES NOT INCLUDE CLUBS IN UNDISTRICTED AREAS.

Clubs				Members			
RESULTS FOR 2023-2024				RESULTS FOR 2023-2024			
QUARTER	NEW CLUB GOAL	NEW CLUBS	DROPPED CLUBS	QUARTER	MEMBER GROWTH NET GOAL	MEMBER GROWTH ACTUAL	DROPPED MEMBERS ACTUAL (including transfers)
JULY/AUG/SEPT	40	22	38	JULY/AUG/SEPT	2,394	3,655	3,166
OCT/NOV/DEC	19	31	70	OCT/NOV/DEC	2,611	3,700	5,910
JAN/FEB/MAR	74	20	24	JAN/FEB/MAR	2,708	2,816	2,068
APR/MAY/JUNE	54	67	71	APR/MAY/JUNE	2,654	6,562	5,275

GOALS AND ACTUAL NEW CLUBS CUMULATIVE



GOALS AND ACTUAL MEMBERS CUMULATIVE



DROPPED CLUBS: 202	2,624 CLUBS OF 4,386 ADDED 1 OR MORE NEW MEMBERS	GENDER DISTRIBUTION MALE 47,586 (46.65%) FEMALE 54,363 (53.30%)
DROPPED MEMBERS DECEASED 802 CLUB CANCELLED 2,160 OTHER 13,421 <hr/> TOTAL 16,383	CLICK HERE FOR CUMULATIVE MEMBERSHIP DATA	TOTAL FAMILY UNIT MEMBERS 38,066 FAMILY MEMBERS PAYING HALF DUES 21,183